

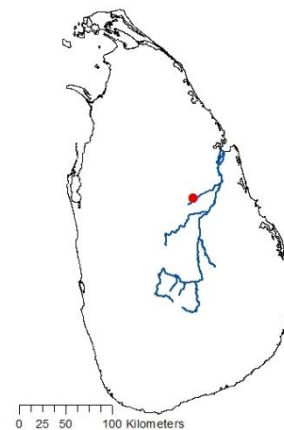
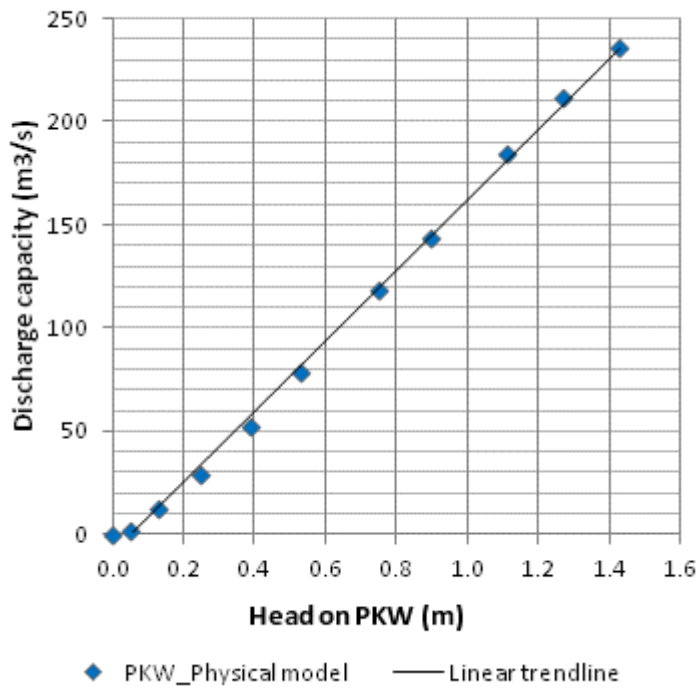


Dam's name:

GIRITALE

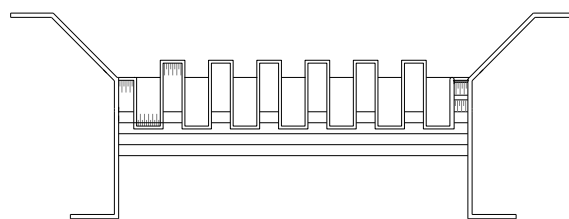
PKW's year of construction:

2013



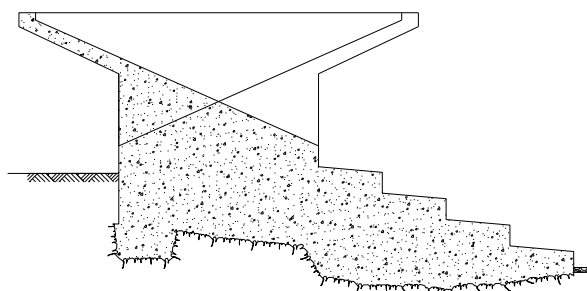
Country: Sri Lanka

<i>Progress of work :</i>	Built
<i>Dam's owner:</i>	Irrigation Department of Sri Lanka
<i>Consultant:</i>	Engs. H M Jayatillake & K T N Perera (Studies & Designs) Hydraulics Laboratory, Irrigation Department of Sri Lanka (Physical Model)
<i>Contractor:</i>	Irrigation Department of Sri Lanka
<i>PKW location:</i>	Enclosing the existing ogee spillway
<i>Downstream energy dissipation type:</i>	Stepped Spillway+ tailrace channel
<i>PKW purpose:</i>	Increase reservoir capacity
<i>PKW discharge capacity at MWL (m³/s):</i>	83
<i>Dam design flow (m³/s):</i>	112
<i>Monitoring devices (Presence and type):</i>	No
<i>Aeration (type and diameter of the pipe):</i>	No
<i>Overflowing Frequency:</i>	Annual
<i>Number of overflow known:</i>	2
<i>Maximum head on PKW experienced (m) and date:</i>	0.2, 21/12/2014
<i>Type and number of other spillway:</i>	None
<i>Material of the PKW:</i>	Reinforced concrete
<i>B (m):</i>	7.2
<i>P (m):</i>	2.4
<i>W (m):</i>	36.9
<i>L (m):</i>	129.9
<i>Number of inlet:</i>	7
<i>W_i (m):</i>	2.5
<i>Number of outlet:</i>	8
<i>W_o (m):</i>	2.0
<i>T_s (m):</i>	0.30
<i>PKW cost (k€)</i>	220
<i>Total project cost (k€)</i>	Not applicable



Plan view of the PKW

Giritale



Cross-section view of the PKW

Comment :

First PKW spillway built in Sri Lanka.